



KS2 SATS- A PARENTS' SURVIVAL GUIDE

November 2021

Impact on the pupil-

- To measure pupil progress and attainment
- Measured against age related expectations as set out in the National Curriculum
- Results for the basis of further teaching and learning.
- Results can be used by secondary schools as ‘baseline’ assessment for setting.
- Results of KS2 SATS are used as part of Progress 8 measures in secondary schools

Impact of St Saviours-

- To measure school performance

Impact on government-

- To identify regional and national trends

SATS- What is their purpose?

- As of 2014, the ‘old’ national curriculum levels (e.g. level 3,4,5) were abolished
- Since 2016, test scores have been reported as ‘scaled scores’

Assessment and Reporting

- Scaled scores range from 80-120
- A scaled score of 100- national standard
- Each pupils raw test score is converted into a score on the scale.
- A Scaled score of 110 or more indicates a pupil is working at greater depth and would be classed as 'exceeding'

Each pupil receives

- A raw score (number of raw marks awarded)
- A scaled score in each subject
- Confirmation of whether or not they have attained the national standard (met/not met)

Scaled Scores

- Old curriculum- level 6 tests
- New curriculum- same test- more challenging questions (usually towards the back).
- Can receive a scaled score of up to 120.

Children working above expected standard

Week commencing

Monday 9th May 2021 – Thursday 14th May 2021

Monday-

English Grammar, punctuation and spelling

- Paper 1: questions (45 minutes – 50 marks)
- Paper 2: spelling (approximately 15 minutes – 20 marks)

Tuesday-

- English reading (60 minutes – 50 marks)

Wednesday-

Mathematics

- Paper 1: Arithmetic (30 minutes – 40 marks)
- Paper 2: Reasoning (40 minutes – 35 marks)

Thursday:

Mathematics

- Paper 3: Reasoning (40 minutes – 35 marks)

SATS week timetable

Paper 1- grammar, punctuation and vocabulary- **50 marks**

- This test lasts for 45 minutes and requires short answer questions including some multiple choice.

Paper 2- Spelling- **20 marks**

- This test lasts for approximately 15 minutes and children are given a word to spell to complete the sentence.

Total marks for test- **70 marks**

SPAG

Insert a **colon** in the correct place in the sentence below.

The school offered three clubs for its pupils art and craft, dance and chess.

© Focus Education UK Ltd. 2015

SPAG

Complete the sentence below with a possessive pronoun

They are _____

SPAG

- Help your children learn the spellings from the statutory word lists
- Check over their writing- encourage correct spelling of common words
- Question children about homework- ask them to explain
- Talk about words- word class <https://parts-of-speech.info/>
- Dictionaries
- Familiarise yourself with the terminology

How you can help at home:

- Reading test- 60 minutes
- 50 marks
- Reading Booklet and answer booklet
- A selection of texts from different genres
- Text becomes progressively harder (some texts have a reading age of 13+)

Reading

The text assesses the key skills of reading comprehension:

- Vocabulary: Explaining the meaning of words in context
- Infer: make inference from the text using clues, explaining and justifying answers.
- Predict: Predict what might happen from the details stated and implied
- Explain: Explain how information is presented/how meaning is enhanced through the choice of words
- Retrieve: find and record key details
- Summarise: summarise main ideas from more than one paragraph

Reading

1

Look at the introduction.

Why is space tourism *impossible* for most people?

1 mark

2

How would you get from the spacecraft to the space hotel?

1 mark

Reading

10

Match the events below to the year in which they happened.

Anousheh Ansari went to space.

1969

The first man stepped on the Moon.

1998

Dennis Tito went to space.

2001

The International Space Station was built.

2006

1 mark

Reading

12

...in a flash... (page 6)

What does this tell you about the burning of rocks in space?

1 mark

Reading

- Ensure that your child is reading every day
- Listen to them read aloud
- Ask them the meaning of words they have read
- Talk about words ALL OF THE TIME
- Watch TV and ask them to summarise

How can you help at home:

Three papers:

- Paper 1: Arithmetic (30 minutes)
- Paper 2: Reasoning & Problem Solving (40 minutes)
- Paper 3: Reasoning & Problem Solving (40 minutes)

Maths

Arithmetic

- 30 minutes
approximately 30
questions
- Calculations
involving the four
operations (X - + ÷)

34	3 7 2 3 3 1	<input style="width: 30px; height: 30px;" type="text"/> 2 marks
Show your method		

24	15.4 - 8.88 =	<input style="width: 30px; height: 30px;" type="text"/> 1 mark

Maths

Arithmetic

- Includes fractions, decimals and percentages

35

$$\frac{3}{4} + \frac{7}{8} =$$

1 mark

27

$$95\% \text{ of } 240 =$$

1 mark

Maths

- Ask them to explain maths homework to you
- Ask them to teach you what they have learnt this week in maths- mini teachers
- Timetable practice

How can you help at home?

- Not assessed through a test
- Teacher assessment (moderated by local borough)
- Portfolio of writing (6 pieces)

Writing

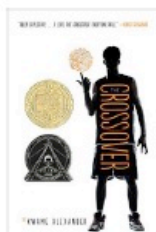
100 BOOKS TO TRY AND READ BEFORE YOU LEAVE YEAR 6



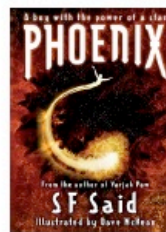
Matilda
Roald Dahl



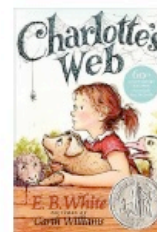
Kensuke's Kingdom
Michael Morpurgo



The Crossover
Kwame Alexander



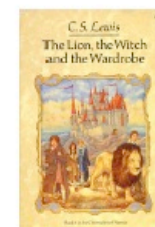
Phoenix
S F Said



Charlotte's Web
E B White



Alice's Adventures In Wonderland
Lewis Carroll



The Lion, The Witch and The Wardrobe
C S Lewis



Stig Of The Dump
Clive King



Artemis Fowl
Eoin Colfer



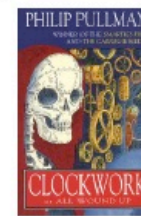
Diary Of A Wimpy Kid
Jeff Kinney



Five Children and It
E Nesbit



Beetle Boy
M G Leonard



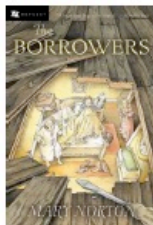
Clockwork
Phillip Pullman



The Secret Garden
Frances Hodgson Burnett



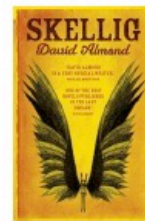
Wonder
RJ Palacio



The Borrowers
Mary Norton



The Fantastic Flying Books of Mr Morris Lessmore



Skellig
David Almond



A Series of Unfortunate Events
Lemony Snickett



The Girl of Ink and Stars
Kiran Millwood



Holes
Louis Sachar

Important things that tests can't measure...



creativity self-control
wisdom motivation
intuition affection loyalty
peacefulness perspective
rhythm faithfulness
honesty determination kindness
courage patience
perseverance spirituality
gentleness joy thoroughness
thoughtfulness generosity
helpfulness flexibility
discernment love character
friendliness compassion
sensitivity confidence

Public Health update: COVID-19 in schools and childcare settings

21st October 2021

Version 55



Summary slide 18/10/2021

Cases and trends

- The weekly **incidence has increased slightly and is 192 per 100,000 and is now classed as DARK RED.**
- There were **634 Covid-19 cases** in Tower Hamlets in the latest 7-day period.

Vaccination

- 214,438 residents have now been vaccinated with their first dose. The number of residents who are fully vaccinated with two doses is now 189,721
- Vaccination uptake is relatively similar across all deprivation quintiles

Schools

- Cases in the last 7 days are highest among **Key Stage 4 and 5 students.**

Impact

- 79 patients are currently in hospital for Covid-19 and 13 are on ventilation.
- 1 death was reported up to 1st October.



Covid-19 main symptoms



A high temperature

This means they feel hot to touch on their chest or back (you do not need to measure their temperature).

OR



A new continuous cough

This means coughing a lot for more than an hour, or 3 or more coughing episodes in 24 hours (if they usually have a cough, it may be worse than usual).

OR



A loss or change to their sense of smell or taste

This means they've noticed they cannot smell or taste anything, or things smell or taste different to normal.

If a child has no symptoms of Covid-19 but has other cold-like symptoms, such as runny nose:

- Their household do not need to self-isolate
- They can attend school if fit to do so



School attendance: Covid v cold symptoms



As winter approaches, more children are likely to get cold symptoms. This could be mingled with the covid symptoms.

Any of the three main Covid Symptoms

Advice:
Stay at home, get PCR tested.
In exceptional cases, where parents decline to get their child tested, the child will need to self-isolate for 10 days.

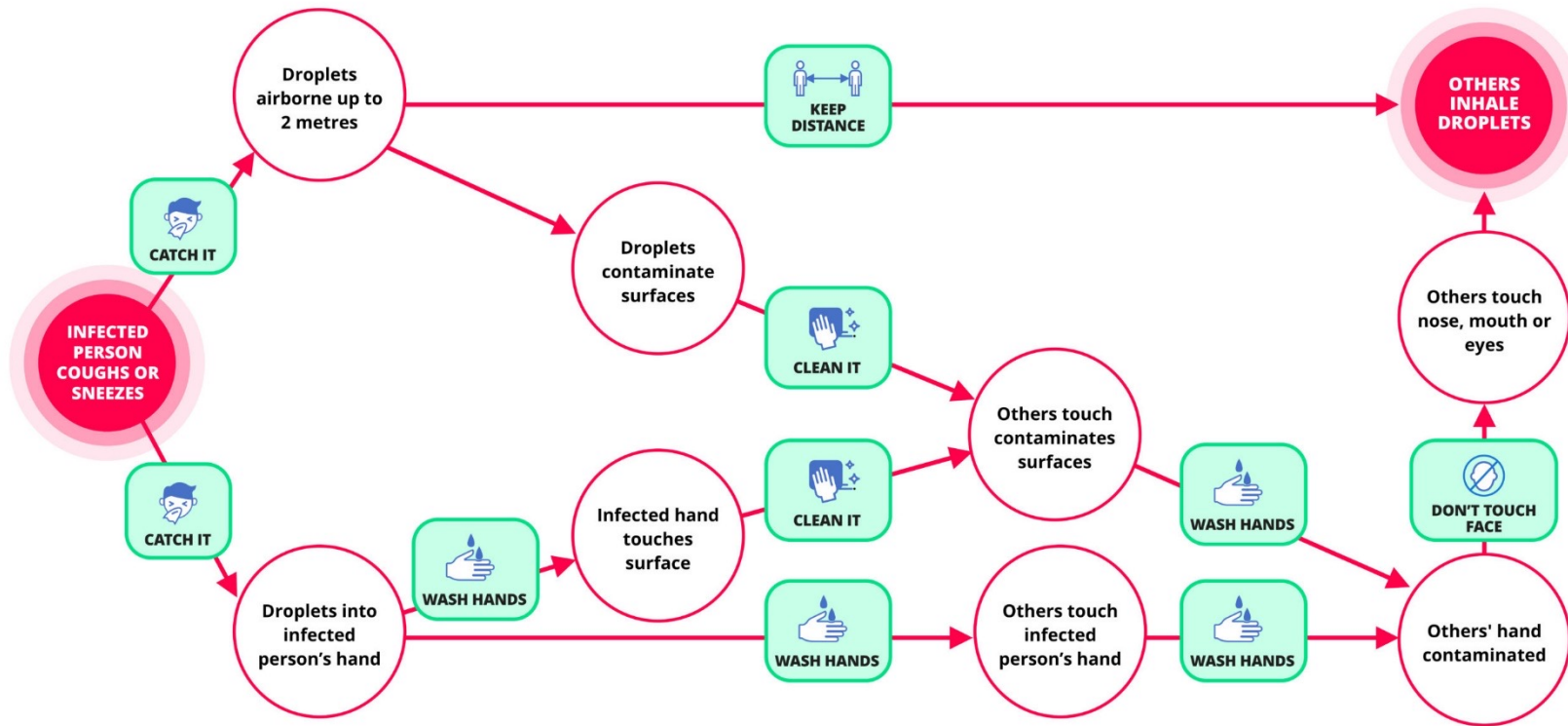
Symptoms of a cold may be similar to covid and there is no way to tell the difference without a test, therefore if children have any one of the main symptoms of coronavirus **they are strongly advised to stay home and get PCR tested.**

Cold symptoms

Advice:
Children should not be routinely missing school due to cold symptoms such as runny nose, sore throat.



How COVID is transmitted



Protective Measures for Settings

Guidance published by DfE details key actions that [schools](#) and [early years settings](#) should take, in reference to **Prevention** and **Response to infection**

- **Numbers 1-5 and 8** must in place at all times
- **Numbers 6** should be applied as appropriate
- **Numbers 7** applies in specific circumstances
- **Numbers 9-11** must be followed in every case where they are relevant.

Prevention

1. **Minimise contact with individuals who are unwell** by ensuring that those who have COVID-19 symptoms, or who have someone in their household who does, do not attend school
2. **Where recommended, use face coverings**
3. **Clean hands thoroughly more often than usual**
4. **Ensure good respiratory hygiene** by promoting the 'catch it, bin it, kill it' approach
5. **Introduce enhanced cleaning**, including cleaning frequently touched surfaces often, using standard products such as detergents
6. **Minimise contact between individuals** and maintain social distancing wherever possible
7. **Where necessary, wear appropriate personal protective equipment (PPE)**
8. **Keep occupied spaces well ventilated**

Response

9. **Engage with the NHS Test and Trace process**
10. **Manage confirmed cases** of coronavirus (COVID-19) amongst the school community
11. **Contain any outbreak** by following local health protection team advice



Effective Handwashing

- Wash hands thoroughly for 20 seconds with running water and soap
- Wash hands regularly throughout the day
- Ensure everyone washes their hands as soon as they enter the school
- There are plenty of resources available to teach children to do this effectively
- Place posters on effective handwashing technique above every sink

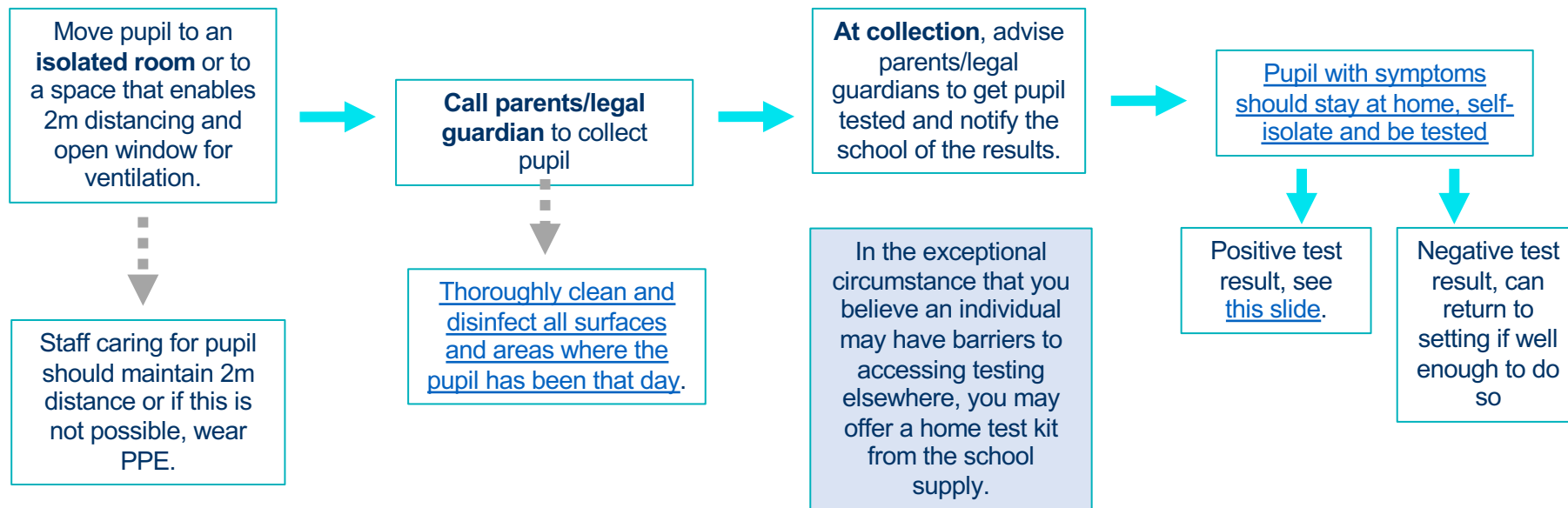


1. <https://www.youtube.com/watch?v=4ij1I0OB2hk>
2. <https://www.youtube.com/watch?v=S9VjeIWLnEg&feature=youtu.be>



Pupil displays Covid-19 symptoms

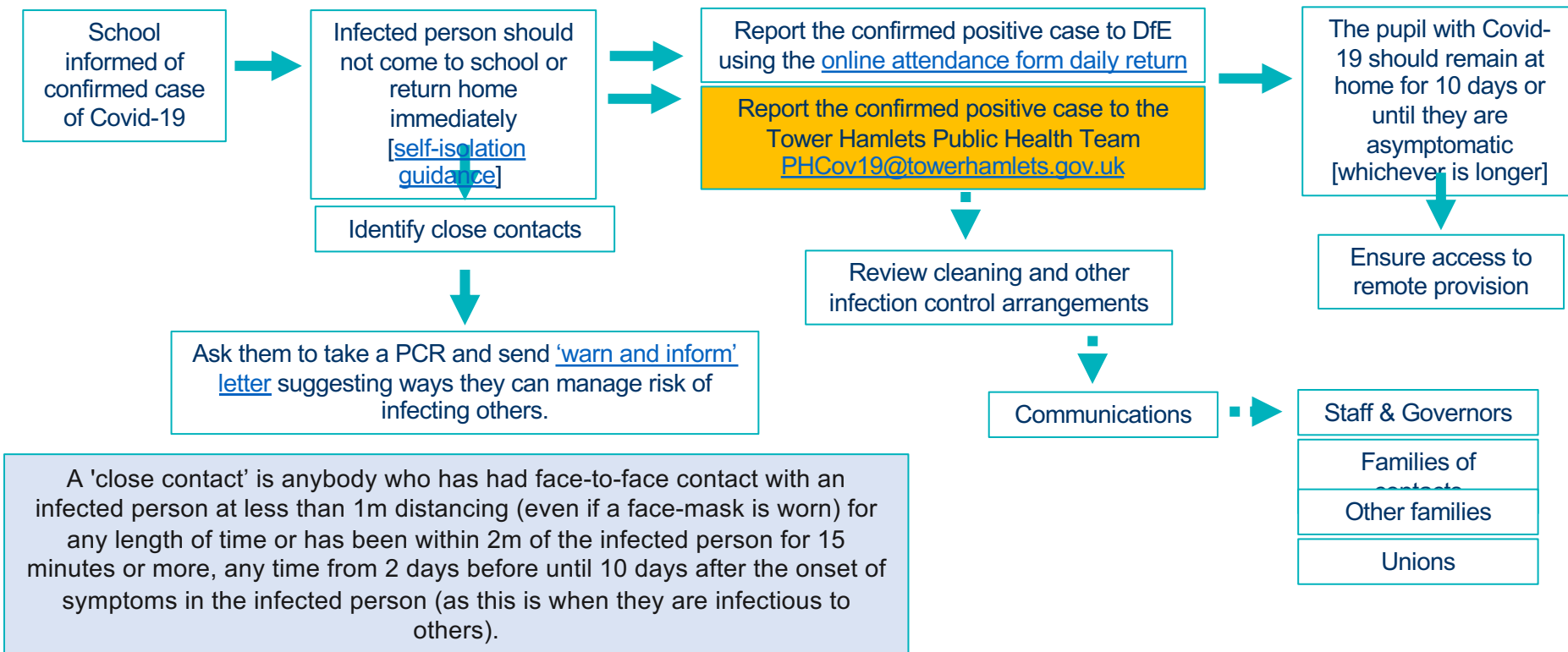
Unsure? Use the [NHS COVID symptom checker](#)



Ctrl-Click on boxes to be taken through to websites for more information



Pupil or staff member tests positive for Covid-19



Self-Isolation Funding Support

It remains a legal requirement to self-isolate if you test positive for Covid-19.

From Tuesday 6 April, parents who live in Tower Hamlets may be eligible to apply for a **£500 self-isolation support payment**. This is specific to:

- Parents of a child aged 15 years and under
- Parents of a child/young adult aged 25 and under and with a special educational plan in place

The parent must be employed and earning less than £30,000 annually.

The parent must also be able to provide confirmation of the need to self-isolate in the form of a self-isolation letter from the child's school/education setting or a confirmation number from NHS Test and Trace. Applications can be backdated to 8 March 2020.

For more information on how to apply for self-isolation support, go to the [council webpage](#).

