



KS1 SATS- A PARENTS' SURVIVAL GUIDE

November 2021

Impact on the pupil-

- To measure pupil progress and attainment
- Measured against age related expectations as set out in the National Curriculum
- Results for the basis of further teaching and learning.
- Results can be used by secondary schools as 'baseline' assessment for setting.
- Results of KS1 SATS are used as part of Progress measures in KS2 at Primary School and then these are used as part of the Progress 8 at Secondary schools.

Impact of St Saviours-

- To measure school performance

Impact on government-

- To identify regional and national trends

SATS- What is their purpose?

- As of 2014, the ‘old’ national curriculum levels (e.g. level 3,4,5) were abolished
- The 2014 curriculum- rigorous and contains higher expectations
- Since 2016 test scores have been reported as ‘scaled scores’

Assessment and Reporting

- Scaled scores range from 80-120
- A scaled score of 100- national standard
- Each pupils raw test score is converted into a score on the scale.
- **A Scaled score of 110 or more indicates a pupil is working at greater depth and would be classed as 'exceeding'**

Each pupil receives

- A raw score (number of raw marks awarded)
- A scaled score in each subject
- Confirmation of whether or not they have attained the national standard (met/not met)

Scaled Scores

- Old curriculum- level 3 tests
- New curriculum- same test- more challenging questions (usually towards the back).
- Can receive a scaled score of up to 115.

**Children working above expected
standard**

- The tests will take place during the month of May.
- There will be two reading papers and two maths papers

SATS Timetable

What happens in the Reading test?

- There are two papers in the Reading test, each worth 20 marks. Each may include fiction, non-fiction and poetry. Children answer comprehension questions to show their understanding of the texts.
 - In Paper 1, children are given a booklet that contains a selection of short texts to read (between 400 and 700 words). There are questions to answer at various points within each text with space for children to write their answers. The test lasts approximately 30 minutes.
 - In Paper 2, children are given a booklet of longer texts (between 800 and 1100 words) and questions in a separate answer booklet. The test lasts approximately 40 minutes.
 - Paper 2 is more challenging than Paper 1, but in each paper easier questions appear at the beginning and more difficult ones later on.
-

A cowboy's job

Two hundred years ago in North America, a huge area of grass covered most of the land. Because people wanted to eat meat, they kept cows on this land.

Cowboys were needed to move the cattle from one place to another. This could take months, so the cowboys lived and worked together and became friends.



A group of cowboys

- 14 What covered most of the land in North America two hundred years ago?

- 15 What job did the cowboys do?

- 16 Why did cowboys become friends with each other?

- Ensure that your child is reading every day
- Listen to them read aloud
- Ask them the meaning of words they have read
- Talk about words ALL OF THE TIME
- Watch TV and ask them to summarise

How can you help at home:

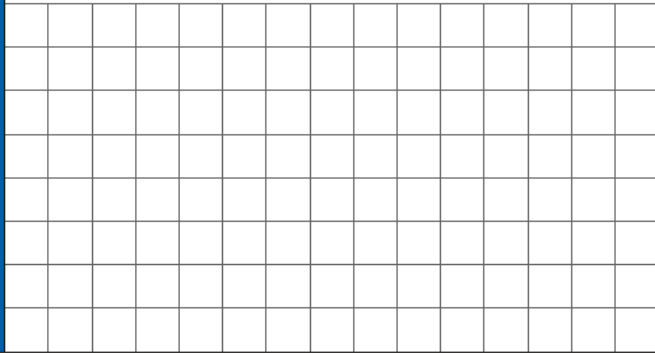
What happens in the Mathematics test?

- There are two papers in the Mathematics test. One focuses on simple arithmetic and is worth 25 marks. One focuses on mathematical reasoning and is worth 35 marks. In each paper the questions appear in order of difficulty.
- In Paper 1: arithmetic, children answer 25 context-free questions to test their fluency with number and calculation skills. They may not use calculators, rulers or any number apparatus to help them. In the test booklet, space is provided for children to use for working out, but they should write their answers in the answer box. The test lasts approximately 20 minutes, so children with good mental arithmetic skills will have a better chance of completing all the questions.
- In Paper 2: reasoning, children answer questions to test their understanding of number, measures, geometry and statistics. The teacher will read the first 5 questions and children must listen and write their answer in their booklet. After this children have approximately 30 minutes to read and answer the remaining questions in the booklet. Some questions involve a problem-solving context. Some questions prompt children to show their working and are worth 2 marks. Children may use rulers, but are not allowed calculators or any other number apparatus.

Key Stage 1 Mathematics

11

$68 + 20 =$



1 mark

12

$7 + 84 =$



1 mark

6

Match each shape to the correct description.

One is done for you.

shape

description

triangle

has 8 vertices

square

has 3 sides

octagon

has 4 right angles

circle

has no vertices

- Ask them to explain maths homework to you
- Ask them to teach you what they have learnt this week in maths- mini teachers
- **Times Table Rock Stars**

How can you help at home?

- Not assessed through a test
- Teacher assessment (moderated by local borough)
- Portfolio of writing (4-5 pieces)

Writing

Important things that tests can't measure...



creativity self-control
wisdom motivation
intuition affection loyalty
peacefulness perspective
rhythm faithfulness
honesty determination kindness
courage patience
perseverance spirituality
gentleness joy thoroughness
thoughtfulness generosity
helpfulness flexibility
discernment love character
friendliness compassion
sensitivity confidence



TOWER HAMLETS

Public Health update: COVID-19 in schools and childcare settings

21st October 2021

Version 55





Summary slide 18/10/2021

Cases and trends

- The weekly **incidence has increased slightly and is 192 per 100,000 and is now classed as DARK RED.**
- There were **634 Covid-19 cases** in Tower Hamlets in the latest 7-day period.

Vaccination

- 214,438 residents have now been vaccinated with their first dose. The number of residents who are fully vaccinated with two doses is now 189,721
- Vaccination uptake is relatively similar across all deprivation quintiles

Schools

- Cases in the last 7 days are highest among **Key Stage 4 and 5 students.**

Impact

- 79 patients are currently in hospital for Covid-19 and 13 are on ventilation.
- 1 death was reported up to 1st October.



Covid-19 main symptoms



A high temperature

This means they feel hot to touch on their chest or back (you do not need to measure their temperature).

OR



A new continuous cough

This means coughing a lot for more than an hour, or 3 or more coughing episodes in 24 hours (if they usually have a cough, it may be worse than usual).

OR



A loss or change to their sense of smell or taste

This means they've noticed they cannot smell or taste anything, or things smell or taste different to normal.

If a child has no symptoms of Covid-19 but has other cold-like symptoms, such as runny nose:

- Their household do not need to self-isolate
- They can attend school if fit to do so



School attendance: Covid v cold symptoms



TOWER HAMLETS

As winter approaches, more children are likely to get cold symptoms. This could be mingled with the covid symptoms.

Any of the three
main Covid
Symptoms

Advice:

Stay at home, get PCR tested.

In exceptional cases, where parents decline to get their child tested, the child will need to self-isolate for 10 days.

Symptoms of a cold may be similar to covid and there is no way to tell the difference without a test, therefore if children have any one of the main symptoms of coronavirus **they are strongly advised to stay home and get PCR tested.**

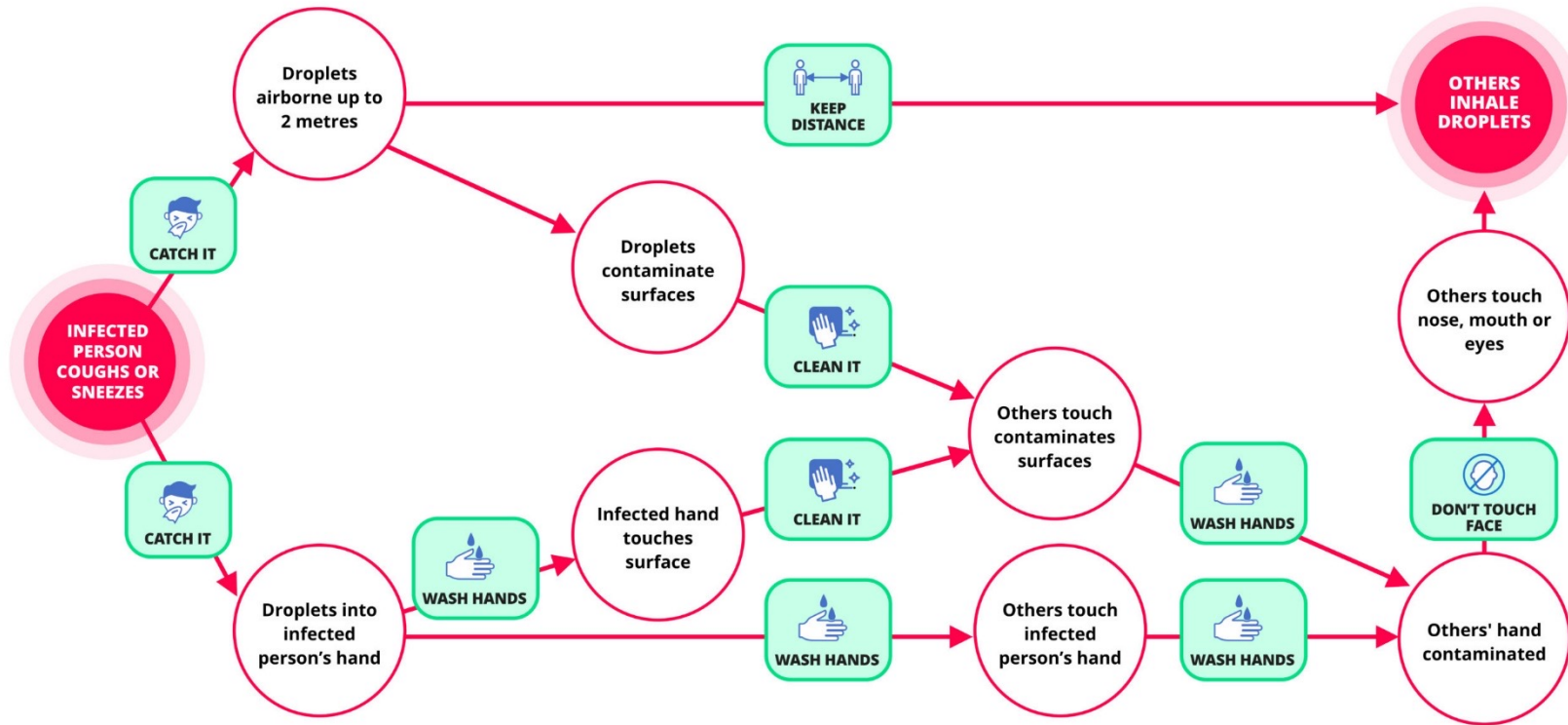
Cold
symptoms

Advice:

Children should not be routinely missing school due to cold symptoms such as runny nose, sore throat.



How COVID is transmitted



Protective Measures for Settings

Guidance published by DfE details key actions that [schools](#) and [early years settings](#) should take, in reference to **Prevention** and **Response to infection**

- **Numbers 1-5 and 8** must in place at all times
- **Numbers 6** should be applied as appropriate
- **Numbers 7** applies in specific circumstances
- **Numbers 9-11** must be followed in every case where they are relevant.

Prevention

1. **Minimise contact with individuals who are unwell** by ensuring that those who have COVID-19 symptoms, or who have someone in their household who does, do not attend school
2. **Where recommended, use face coverings**
3. **Clean hands thoroughly more often than usual**
4. **Ensure good respiratory hygiene** by promoting the 'catch it, bin it, kill it' approach
5. **Introduce enhanced cleaning**, including cleaning frequently touched surfaces often, using standard products such as detergents
6. **Minimise contact between individuals** and maintain social distancing wherever possible
7. **Where necessary, wear appropriate personal protective equipment (PPE)**
8. **Keep occupied spaces well ventilated**

Response

9. **Engage with the NHS Test and Trace process**
10. **Manage confirmed cases** of coronavirus (COVID-19) amongst the school community
11. **Contain any outbreak** by following local health protection team advice



Effective Handwashing

- Wash hands thoroughly for 20 seconds with running water and soap
- Wash hands regularly throughout the day
- Ensure everyone washes their hands as soon as they enter the school
- There are plenty of resources available to teach children to do this effectively
- Place posters on effective handwashing technique above every sink

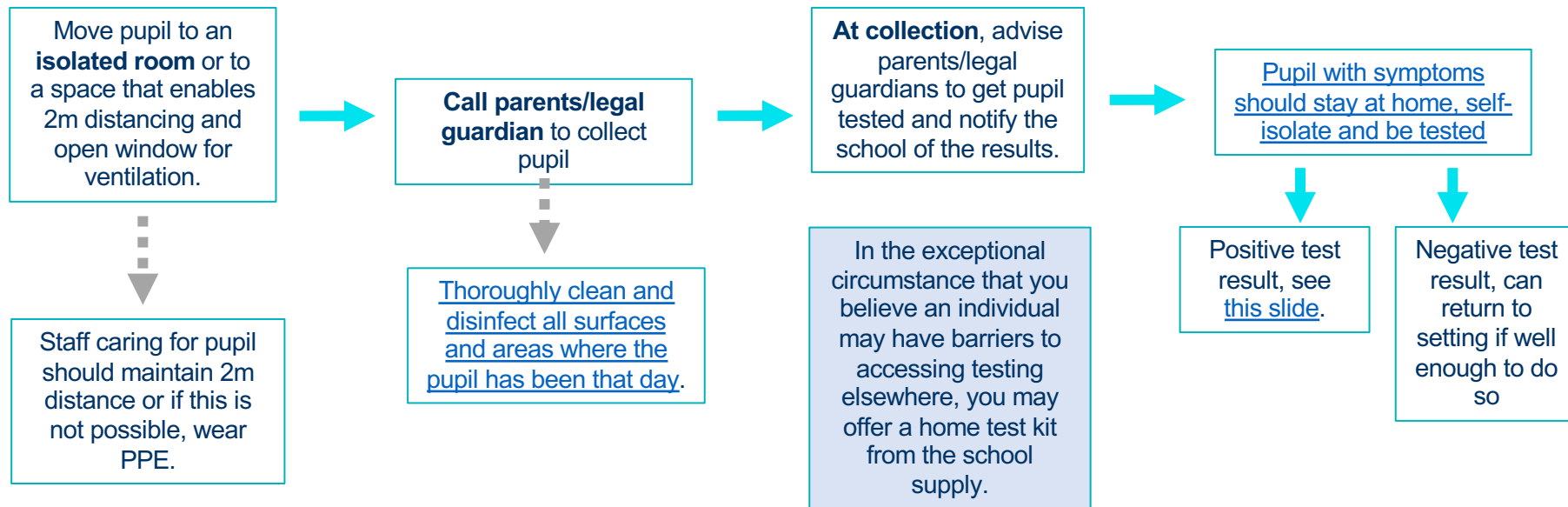


1. <https://www.youtube.com/watch?v=4ij1I0OB2hk>
2. <https://www.youtube.com/watch?v=S9VjeIWLnEg&feature=youtu.be>



Pupil displays Covid-19 symptoms

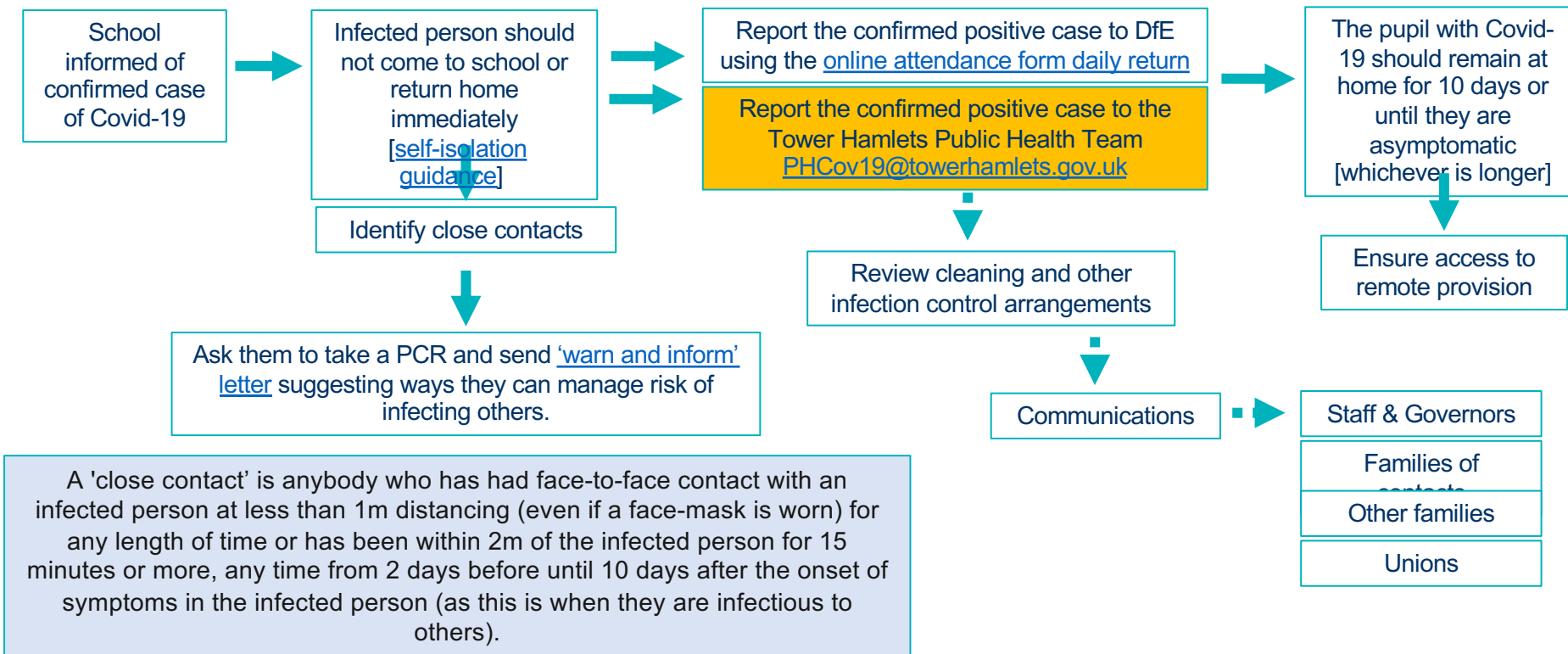
Unsure? Use the [NHS COVID symptom checker](#)



Ctrl-Click on boxes to be taken through to websites for more information



Pupil or staff member tests positive for Covid-19



Self-Isolation Funding Support

It remains a legal requirement to self-isolate if you test positive for Covid-19.

From Tuesday 6 April, parents who live in Tower Hamlets may be eligible to apply for a **£500 self-isolation support payment**. This is specific to:

- Parents of a child aged 15 years and under
- Parents of a child/young adult aged 25 and under and with a special educational plan in place

The parent must be employed and earning less than £30,000 annually.

The parent must also be able to provide confirmation of the need to self-isolate in the form of a self-isolation letter from the child's school/education setting or a confirmation number from NHS Test and Trace. Applications can be backdated to 8 March 2020.

For more information on how to apply for self-isolation support, go to the [council webpage](#).

